

Courchevel

Novelties

What's new in Courchevel?

Courchevel reinvents itself and
expands again for winter 2025–2026

—

As the new winter season approaches, Courchevel continues to assert its status as a premier alpine destination. This year marks the arrival of several prestigious new addresses, including five-star hotels, upscale serviced residences, and refined hospitality concepts that will further enhance the resort's accommodation offering.

The culinary scene is also evolving, with new restaurants and talented chefs bringing fresh energy and creativity to the resort. These additions further solidify Courchevel's reputation as a gourmet destination, where excellence, innovation, and diversity define the dining experience.

At the same time, the resort is undertaking a major renovation of its ski area. New infrastructure and upgrades are being implemented to improve access, comfort, and the overall quality of experience on the slopes — a testament to Courchevel's ongoing commitment to excellence.

More rooms, more flavor, and even more inspiration: this winter, Courchevel continues its bold path of renewal and growth, offering guests an ever-richer array of experiences — where elegance, authenticity, and mountain art de vivre come together in perfect harmony.

Atmosphère

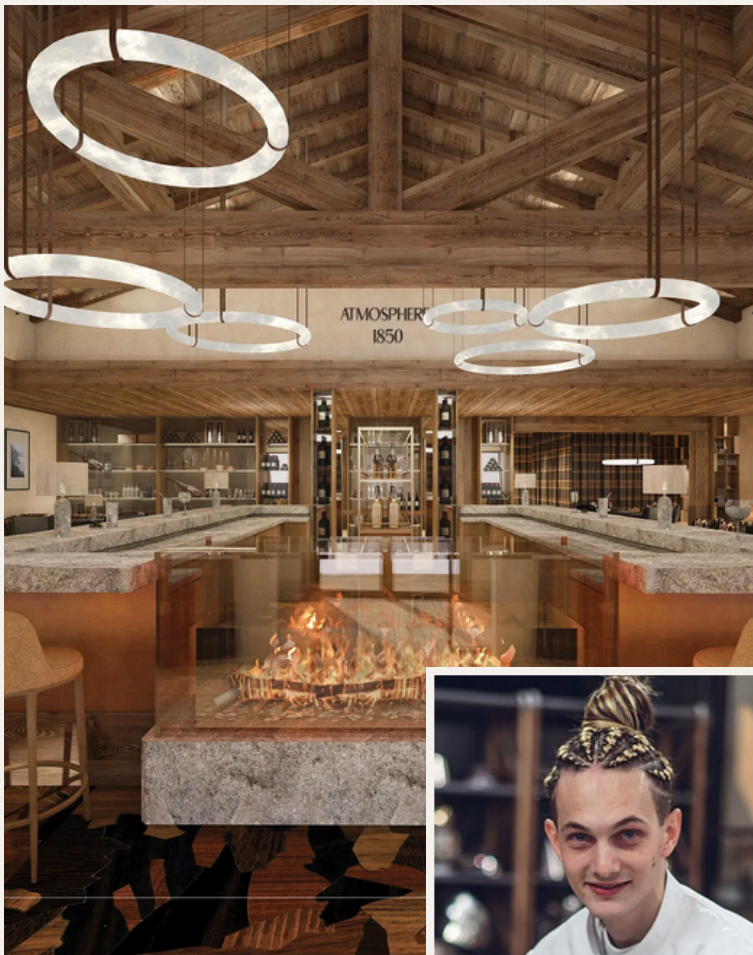
By Cimalpes – in 1850

With **18 flats** for up to 8 people, the residence offers timeless chalet-inspired design and panoramic views of the Alps.

After a day on the slopes, relax in the 600 m² wellness area, featuring a 22-metre indoor pool, sauna, hammam, fitness and coaching studios and three treatment rooms.

On-site, a refined restaurant invites guests to discover creative Alpine cuisine in a warm and intimate setting

The new restaurant will be run by the michelin sarred : **Dany Khezzar**



Le Maya

By Maya Bay– in 1850

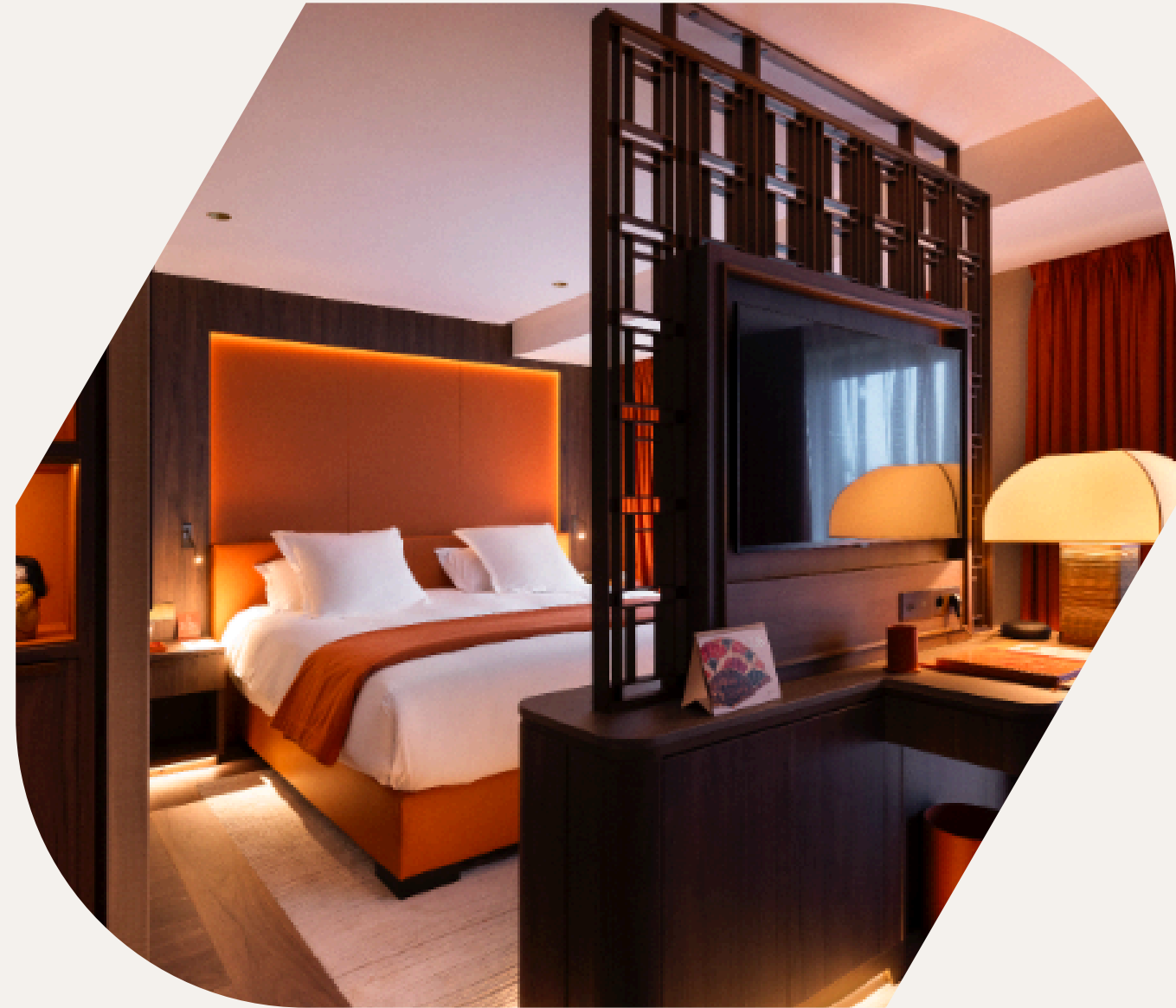
The hotel will offer **14 rooms** and suites across **4 elegant categories**, combining comfort, serenity, and breathtaking views of Courchevel or the surrounding mountains:

- **Deluxe Rooms:** for up to 2 adults, with or without a balcony.
- **Exclusive Rooms:** spacious, with a balcony and mountain view.
- **Junior Suites:** refined interiors, with or without a balcony, views over Courchevel or the peaks.
- **Suites:** luxurious and inviting, with optional balcony and choice of view. by Takashi Murakami.

A range of bespoke services will enhance every stay:

- concierge,
- chauffeur,
- ski equipment
- private lessons,

Forlle'd treatments, Lalique boutique, and private dining for the Lalique Suites.



Alpine collection Sundance Lodge – Courchevel moriond

Oppening on 2026/2027

Bokka restaurent will be open on december 2025 – Italian style



Courchevel under the stars

The restaurant **Baumanière 1850****, nestled within the refined setting of **Hôtel Le Strato**, has been awarded a **second Michelin star**, recognizing the bold and meticulous cuisine of chef Thomas Prod'homme.



Alpage*
HOTEL ANNAPURNA*****
Chef Jean-Rémi Caillon

Le Farçon*
Chef Julien Machet



Le Chabichou**
HOTEL Le Chabichou*****
Chef Stéphane Buron

Le Baumanière 1850,
HOTEL Le Strato*******
Chef Thomas Prod'homme

Le Sylvestre**
HOTEL Les Grandes Alpes*****
Chef Sylvestre Wahid



Le 1947***
**HOTEL Cheval Blanc
Courchevel*****PALACE**
Chef Yannick Alléno

Gastronomy

BLACK CROWS COFFEE 1850

At the top of the forum Courchevel 1850

NEW RESTAURANT AT L'APOGÉE 1850

Beef Bar

MAYABAY COURCHEVEL

MAYABAY COURCHEVEL

MayaBay offers a sublime sensory experience with its zen atmosphere, traditional dishes, refined Asian flavours and impeccable service, for an unmissable tasting experience. The perfect harmony of Japanese and Thai cuisine.

MAYABAY BAR & LOUNGE

A creative mixology bar for signature cocktails and other drinks. Its delicious mixes and elegant decor make it the ideal social haven.

NEW RESTAURANT AT L'ATMOSPHERE 1850

With the a michelin starred chef: Danny Khezzar

NEW RESTAURANT FOR ALPINE COLLECTION

Sundance Lodge - BOKKA restaurent - Italian concept



S3V

New arrival station for the **Chenus cable car** from **La Croisette** to **Bagatelle**

Developed by POMA, a global leader in cable transport solutions, the new installation will feature 10-seater EVO 2 cabins, doubling its capacity to 2,400 passengers per hour. The route will remain close to the current one, minimizing the impact on local ecosystems.



Courchevel Celebrates 80 Years of Alpine Excellence

In December 2026, Courchevel will proudly celebrate its 80th anniversary — a milestone for this legendary resort that has embodied alpine elegance, innovation, and mountain lifestyle since 1946.

Throughout the 2025/2026 winter season, the resort will mark this special occasion with a series of events, symbolic initiatives, and memorable highlights, paying tribute to 80 years of history, sport, passion, and prestige.

Locals, guests, and longtime Courchevel lovers will all be invited to take part in this exceptional celebration.

